

London Asbestos Support Awareness Group Newsletter

Autumn 2022

London and the South East

For anyone affected by
Mesothelioma or other Asbestos
related diseases in London and the
South East, including Essex, Surrey,
Kent and Hertfordshire

Registered Charity No.1174543

Introducing Our First Patron

Mr Anthony Dulwich

We are proud to announce that we have appointed our first Patron to our charity - Mr Anthony Dulwich.

Anthony is an inspiration to mesothelioma sufferers and is always willing to support in a positive way. His enthusiasm, determination, along with his can-do attitude, will be of tremendous support to our charity. Anthony's story in his own words:

My Story - By Anthony Dulwich

I was born in Bethnal Green, East London. I began working at the age of 15 washing down lorries and trailers with a jet wash. In 1973/74 at Nicholls & Clarke Ltd which was an ironmongery merchant in Shoreditch High Street. I worked within their rainwater pipe department. My role was to cut the asbestos flue pipes with a mechanical saw, this created a lot of dust. I worked there roughly for a year until I got my apprenticeship with Falkus Construction Ltd in 1974/75 which was a construction company who refurbished office blocks and houses in the city. I worked in the joinery shop which is when I came into contact with asbestos by sawing Asbestolux boards. I fixed the boards on to doors to fire proof them. I would make pipe casings on site, out of Asbestolux boards. I asked my site foreman if this is bad for you he replied "drink a pint of milk" and it will clear your lungs, so I did.

The only protective equipment that I was supplied was a small galvanised mask with lint over the mouth that was black. The rooms were full of dust from the board cutting and I would come home from work looking like a snowman, but they still insisted it wasn't harmful.

In 1977/78 I commenced working as a carpenter for R. W. Bowman Limited. It was a company based in East India Dock Road in Poplar. I was exposed to asbestos whilst working at Barclays Bank in Warren Street, London again whilst working with Asbestolux boards and also working in a large manor house called Eagle House in Mitcham, South London.

Between the late 1970's and 1980's in the construction industry, asbestos and Asbestolux boards were widely used for covering of pipes and fixing onto doors to make them fire proof. In the 1980s Asbestolux was deemed to be safe in the construction world.

My Mesothelioma Journey

Whilst on vacation in Majorca, I noticed that I couldn't swim as far as usual or walk as far. When I returned from my holiday, I booked an appointment with my GP. My GP diagnosed my symptoms as a chest infection and prescribed me with antibiotics. The antibiotics had no effect, so I decided to book a scan privately at the Cromwell Hospital in Knightsbridge. The scan showed that my right lung had filled up with three and a half litres of fluid and my lining had come away from my lung. I was asked if I had sufficient funds to fund the private treatment.

I was admitted immediately, and they called a lung specialist that very evening to start draining my lung. A biopsy was then performed ten days later.

The surgeon found a growth on the top of my lung the size of half a golf ball and a growth on the bottom of my lung which he removed in an eight hour operation. I then attended one weeks' cycle of radiotherapy and the following Monday I started chemotherapy. I had three types of chemotherapy in an eight hour session which I had six times every three weeks. I then had six sessions of a top up chemotherapy every three weeks so in total twelve sessions of chemotherapy.

I was then transferred over to the Royal Marsden Hospital in London where they recommended immunotherapy treatment. I had immunotherapy for two months and a total of around eight sessions. I had a bad reaction from the immunotherapy as my immune system attacked my liver and

I became very ill. I was then taken off the immunotherapy and was cancer free for months. I now have a small area that has appeared in my right shoulder, and I am due to have radiotherapy to clear this up in November 2022.

"I am really pleased to have been appointed as Patron for London Asbestos Support Awareness Group who continue to support victims of asbestos exposure"



Photo shows Anthony and Marina Dulwich

You are invited to attend one of our Support Groups held at various locations in the South East.

These are free and many of those suffering from asbestos diseases welcome the information they obtain at them. Our support workers very much look forward to seeing you there:

1. Rainham Kent Support Group

Rainham Cricket Club, Berengrave Lane, Lane, Rainham, Gillingham, ME8 7NA.

This support group is facilitated by Lung Clinical Nurse Specialists from Medway NHS Foundation Trust, along with our local Kent support workers. It takes place on the first Tuesday of each month at 3.00pm-4.30pm.

2. Isle of Sheppey Kent Support Group

Harps Inn, Minster on Sea, Sheerness, ME12 2RN.

This group is run by our Kent Support workers, together with Lung Clinical Nurse Specialist and the Mesothelioma UK Nurse, Toni Fleming, who will be available to support patients on a one to one basis. It takes place on the first Wednesday of each month at 3.00pm-4.30pm.

3. Canterbury Kent Support Group

ARCA Hall, 151 Ashford Rd, Canterbury, CT1 3FA.

This group is run by our Kent support workers with extra support from Clinical Nurse Specialists and a Mesothelioma UK Nurse Toni Fleming and her team and is able to offer one to one support. It takes place on the second Tuesday of every month at 2.00pm-4.00pm.

4. Tunbridge Wells Kent Support Group

Mercure Hotel, The Park View Room, 8 Tonbridge Rd, Pembury, Tunbridge Wells, TN2 4QL.

This group is jointly run with the Mesothelioma UK Nurse, Louise Gilham and our support worker, Denise Hodges. This will take place on the last Wednesday of each month at 2.30pm-4.00pm.

5. Dagenham East London Support Group

Moby Dick pub, Whalebone Lane, Dagenham, Romford RM6 6QU.

This group is run by our London and Essex support worker and is run on the last Thursday of each month at 11.00am-1.00pm.

6. London Support Group

This group varies in locations and dates, primarily due to the availability of guest speakers. See our website for more information or contact Jodie Bull on jodie@lasag.org.uk.

7. Online Zoom Support Group

This group is run jointly by our London and Hertfordshire support worker and the Royal Marsden Consultant, Michael Davidson. The format for the Zoom meetings is to give up to date information followed by a question and answer session. We often invite additional guest speakers, relevant to the topics of the session. This is normally run around every 6 weeks – dependent on availability of guest speakers. See our website for more information or contact Jodie Bull on jodie@lasag.org.uk.



You are invited to attend one of our Friendship Groups.

These are primarily to provide support to family members of sufferers of asbestos diseases. These are held at various locations in the South East. These are free. Our support workers very much look forward to seeing you there:

1. Canterbury Friendship Group

The Eatery, 2nd Floor, Fenwick's Department Store, St George's St, Canterbury, CT1 2SR. This group is for family members of sufferers who like to meet locally to support each other. This group is run by a Kent support worker and is held on the second Wednesday of each month at 10.30am-12.30pm.



JODIE BULL
Support Manager



DENISE HODGES
Support Worker

2. Dagenham East London Friendship Group

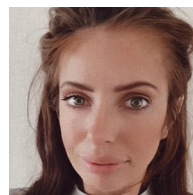
Moby Dick pub, Whalebone Lane, Dagenham, Romford RM6 6QU. This is a new group which is facilitated by our London and Essex support worker. It will start on 1st December 2022 at 11.00am-1.00pm.



LOUISE CHAFFE
Support Worker



JENNY TOMPKINS
Support Worker



JADE HANNAN
Support Worker

Please see our website, www.lasag.org.uk or contact Jodie Bull on jodie@lasag.org.uk for further information about all our support and friendship groups. Alternatively, please contact your support worker who will be able to update you on the meeting agendas and inform you of the names of the guest speakers. We very much hope to see you at one of our events and welcome any ideas and topics you wish to discuss.

Newsflash Asbestos Victims Support Groups Forum UK

We are delighted to announce we have now been appointed as an "Asbestos Victims Advice Group" member of the Asbestos Victims Support Group Forum UK (the Forum) which is the charity representing all individual support groups throughout the UK.

See link to the Forum's website: <https://asbestosforum.org.uk/>

CAPE DEFENDERS OF JUSTICE

Members of the Asbestos Victim Support Group Forum UK (the Forum) including ourselves joined in demonstrations on Friday 30th September 2022 outside the offices of Cape/Altrad in Rotherham and Warrington to seek justice for victims, past and present, who have been exposed to asbestos through Cape's actions. Cape Limited was one of the leading manufacturers of asbestos products in the UK and made billions of pounds profit from their products which sadly caused thousands of deaths as a result of the asbestos exposure.

Chants of "Cape must pay" and "shame on Cape" for putting profits before lives could be heard throughout the protests. Further support for justice for all was shown by motorists who beeped their horns as they drove passed.

Please continue to support the campaign by signing the petition www.change.org/CapeMustPay

**If you would like further information
email: forum.asbestos@gmail.com
or visit <https://asbestosforum.org.uk/campaign-resources/>**

Speakers included Joanne Gordon, Chair of the Forum; Leigh Day Lawyer, Harminder Bains; Simon Bolton, Mesothelioma Clinical Nurse Specialist and Greater Manchester Asbestos Victims Support Group member, Rob Rayner. They highlighted the devastation and injustice caused by Cape.

Cape closed their blinds to try to ignore the protest, however it was clear we were not going away! We entered the offices of Cape/Altrad and spoke to staff to tell them why we were demonstrating, only to be told they already knew and there were no 'decision makers' available in the premises. We are hopeful our message was passed on to higher management and that our chants have given them something to think about.



The Barrow Department for Work & Pensions Benefits Office set for closure by the Government

Earlier in the year the Asbestos Victims Support Group Forum UK (the Forum) was notified that the Industrial Injuries Disablement Benefit site in Barrow in Furness was to be closed. In 2017 the Forum had run a campaign to save the office and that campaign was successful. Due to the Government's recent decision the Forum is running another campaign to keep the Barrow office open, or to find another more suitable site (if according to the Government the building isn't fit for purpose).

This campaign is to ensure the experienced staff who have years of knowledge and understanding of the complicated benefits system and Government compensation schemes relating to asbestos diseases will be retained. No other Government department has administered the lump sum schemes which have complicated rules. Furthermore, the Barrow staff have always had a good working relationship with support groups and the Forum. Sadly, at the time of writing the closure is happening piecemeal and too quickly. Already work is being undertaken by another office in Barnsley. Lines of communication such as emails and direct lines have been closed. The result of which is a poor service to terminally ill people who deserve better when they are paying with their lives for merely going to work.

Problems on the new generic helpline established to deal with Industrial Injuries Disablement Benefit Enquiries

The staff on this helpline are relying on notes and not knowledge of the cases. These notes are not always up to date and helpline advisors are having to look on several screens to find out the progress of the claim. The staff in the new office have a lack of understanding of the dangers of asbestos and asbestos diseases. Some of their recent decisions have highlighted this, as they have rejected claims which in the past would have been dealt with swiftly.

Lung Cancer Cases

What is even more distressing is that people suffering from lung cancer are having their cases refused on 'points of law'. These points of law were established in the regulations when they were written. The law stated that a person suffering from lung cancer must be "involved with asbestos insulation work". It did not state that they must be an "insulation worker". This was tested at tribunal where the tribunal agreed that the wording included, "those undertaking insulation work" such as maintenance fitters. Barnsley are now turning cases down once again. This causes unnecessary delays to asbestos lung cancer sufferers because tribunal hearings can take years to take place, thus depriving lung cancer sufferers of benefits.

We do not want to undermine the staff at other Department of Work and Pensions offices but we see that there are training issues which have not been addressed and which could be eliminated by saving the experienced staff at Barrow. Where wrong decisions are made, there will be consequential costs involved by having to take cases to tribunal, as well as the human costs involved for those suffering with terminal illnesses caused merely by going to work.



Kent man wins his appeal for award from asbestos payment scheme

A Kent man who was exposed to asbestos whilst working as a trainee mechanic at Neves Garage (Garage), in 25-35 Birkbeck, Sidcup Kent for a period of 6-8 months during 1971 and 1972 secured a lump sum payment under the Diffuse Mesothelioma Payment Scheme (DMPS) despite having issued a court action.

Michael Stammers (Michael) was diagnosed with the asbestos related cancer, mesothelioma, more than 50 years after an alleged exposure to asbestos at the Garage whilst undertaking maintenance, repairs and servicing of a range of vehicles including invalid carriages named "Invacars".

The brake linings on the Invacars and other vehicles were made of a combination of asbestos plus a resin. The practice at the Garage was to take the brake drum off from the axle, to bang out the accumulation of dust from the drum on to the floor and use a compressed air line to blow away all the remaining dust from the brake assembly around the brake pads. This would cause the dust to blow out around him.

Michael instructed Harminder Bains Partner at Leigh Day to obtain compensation in light of the above exposure against the Garage. Harminder issued court proceedings against the Garage on 18th January 2022 and obtained judgment in default on 22nd April 2022. At the time of issuing, the Garage was a live company and Harminder believed it had assets; she also had been advised by the Garage that they had forwarded details of the claim to their insurers.

However, upon receipt of the judgment, it became clear that the Garage had no assets, nor any employment liability insurance.

Therefore, Harminder submitted a claim on 9th May 2022 under the DMPS to Topmarks, the Scheme administrators, requesting that Michael be paid a lump sum under the Scheme. Topmarks, however, rejected the application on

the basis that Michael had already pursued a civil claim (and indeed had obtained judgment), thereby falling foul of section 2 (1) (c) of the Mesothelioma Act 2014 which states that to be eligible under the Scheme, it must be shown that:

"the person has not brought an action for damages in respect of the disease against the relevant employer or any insurer with whom the employer maintained employers' liability insurance at the time of the person's exposure to asbestos"

Given this clear injustice, Harminder advised Michael to appeal the decision. At the appeal hearing on the 14th October 2022, Topmarks instructed lawyers who submitted an 11-page response to the appeal and argued *"if a person elects to pursue a claim for damages through the courts, then they must follow all of the remedies that the civil justice system has to offer right through to the end... If that leaves the person without compensation, so be it"*.

On behalf of Michael, it was argued that he was caught between two stools. On the one hand, as the Garage was an active company, pursuant to subsection 2 (1) (d) of the Mesothelioma Act 2014, Michael was obliged to bring an action against it; but then he was denied any form of payment as a result of doing so, pursuant to subsection 2 (1) (c). This was manifestly unfair, and contrary to the aim of the Scheme. It was argued that for the Scheme not to be undermined by this logical fallacy the proper interpretation of subsection 1 (2) (c), must be: *"the person has not brought an effective action*



Photo shows Michael and Carol Stammers

for damages in respect of the disease against the relevant employer or any insurer with whom the employer maintained employers' liability insurance at the time of the person's exposure to asbestos"

When the Tribunal Judge heard both sides of the argument, thankfully, it was found that Michael had not brought an effective action for damages, and accordingly agreed that he was eligible for a lump sum payment under the Scheme.

After the judgment was given, Michael said:

"Harminder Bains of Leigh Day was our solicitor, she helped me with my claim as I have mesothelioma which is cancer of the lining of the lung. I contracted this disease when I worked in a garage changing brake shoes, this was over 50 years ago and was my first job.

"The first thing Harminder did was get all the experts together which confirmed my disease Mesothelioma. She then went to court on my behalf and won the case, but subsequently the company had no assets although they are still trading today. She didn't leave it there, she then went to DMPS and because I had judgment from the court, I wasn't allowed to claim from DMPS which is unfair as the wording states if you have claimed from your previous employer you cannot claim from them as it clearly states yes or no. However, Harminder would not leave it there she

went to appeal, and our barrister Mr Kerr also thought it was unfair and took our case pro-bono. "We then had a hearing on the computer with Harminder and Mr Kerr, and a barrister for the scheme and a Judge. And the Judge was in our favour and we won the appeal. We hope this will help others to make a claim.

"We also would like to thank Harminder Bains and Mr Kerr the barrister for this amazing result"

Harminder Bains said:

"The Act underpinning the DMPS criteria plainly needs to be clarified to make it explicit that claims can be made in circumstances such as Michael's. If the Tribunal Judge had not overturned the Administrator's decision, Michael would have been deprived of compensation which he clearly can benefit from, in so many ways, such as paying for care and obtaining treatment which he would not be able to afford. This would have been a great injustice. It is now time that the Government reviews the Act and Scheme itself. For a start, the payment received under the Scheme is far less than Michael would have obtained in the civil action. In addition, I can't help but feel that Topmarks have deprived many other victims of payments as the victims have not had legal representatives who are prepared to continue to fight their cases on a pro-bono basis. Therefore, the number of payments from the Scheme is artificially low."

Smith v Central Asbestos Co Limited 1972

Paul Webber of Thompsons London notes that 2022 represents the 50th anniversary of this landmark Judgment. It is famed for being the first successful asbestos related disease claim in the House of Lords. By challenging the ambiguous wording in the Statute of Limitations, it enabled more workers to bring industrial disease claims and ultimately, led to a change in the law.

Thompsons represented Mr Dodd, one of several Claimants in the case. An employee of Central Asbestos Co Limited from 1952 to 1965, he retired on medical grounds after being diagnosed with an asbestos related medical condition. As there was no doubt that Mr Dodd had been negligently exposed to asbestos dust, he was awarded disablement benefit. However and cynically, his works manager told him, wrongly, he could not bring a case against the Company. Two years later, Mr Dodd discovered that former colleagues were making claims for compensation.

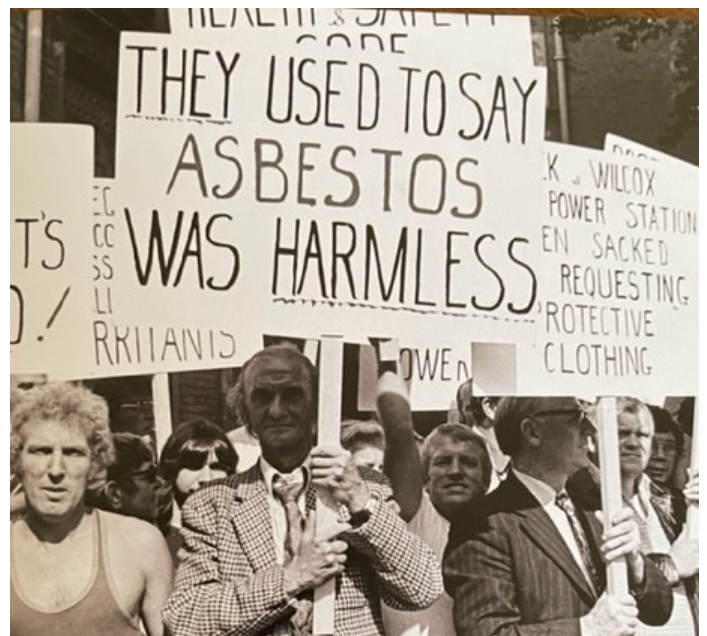
This delay, caused by incorrect information by a manager of the employer, meant Central Asbestos Co contested the claim, on the grounds Mr Dodd was out of time. The Claimant stood his ground and the case progressed to the highest Court in the land, the House of Lords (now Supreme Court). The Judges agreed with Mr Dodd and overturned previous restrictions on the ability of asbestos victims to bring claims, outside the three year period set by the legislation.

This case demonstrates the lengths to which companies and their insurers go to avoid payment, even when they accept that an employer has been in flagrant breach of safety regulations, designed to protect their workers.

The Judgment paved the way for other claims on the same point. It remains the

leading authority on the interpretation of the Limitation Act. That statute was repealed and replaced in 1980, with the successor Act being much clearer for Claimants and widened the scope of the relevant definition. The result therefore, is that more people who suffered asbestos and other industrial diseases, being eligible for compensation.

In the ensuing 50 years, Thompsons has stood shoulder to shoulder with unions, support groups and campaigners, defeating all attempts to restrict the rights of asbestos victims and their families. Paul says "we have to remain vigilant, as the last half century has shown that there remain employers and insurers who exploit legal loopholes to deny compensation to asbestos sufferers. They must be held to account"



THE BEAUTY INDUSTRY'S UGLY SECRET

by Isobel Lovett, Partner,
Hodge Jones & Allen LLP

The importation and new use of asbestos was finally banned in the UK in 1999, more than 60 years after the first regulations to protect asbestos workers came into force here. In the intervening period, there was developing awareness amongst asbestos product manufacturers that the products they were peddling for enormous global corporate profit had potentially deadly consequences for anyone exposed to asbestos dust and fibres. This industry research was deliberately hidden.

In October 1965, the front page of the Sunday Times carried an article featuring the recently publicized Merewether & Price report on research which had confirmed the risk to workers and their families of their developing mesothelioma, an asbestos related cancer of the lining of the lung (and other organs), from exposure to even low levels of asbestos dust.

By the 1980s, increasing numbers of people who had previously been exposed to asbestos dust were dying of mesothelioma. Faced with mounting evidence, in order to be able to continue selling their deadly products, the industry promulgated the myth that whilst blue and brown asbestos dust might potentially be harmful when inhaled, chrysotile (white asbestos) was "safe". This corporate deception has since been undermined by the ongoing toll of asbestos deaths in people who can have only been exposed to white asbestos dust.

In the UK, we may have taken comfort in the 1999 ban from the further import or production of asbestos products. Little did we know though that products, which we would never have expected to contain asbestos fibres, have continued to be imported and sold to us by trusted household brands. We are talking here about talcum body power and powder make-up products.

Here's the rub: asbestos, a fibrous, naturally occurring mineral, is frequently found alongside talc. They are "companion minerals". In certain talc mines in some countries, including Canada, the United States and Italy, manufacturers of talcum body powers sourced their talc, milled it, packaged it, marketed it and sold it to us consumers around the world. The problem was that unbeknown to us, some of the talc was contaminated with asbestos fibres, so while we were powdering ourselves and our children, we may inadvertently have been getting a lung full of asbestos fibres in the process.

Why didn't the manufacturers know and stop this? In the 1960s at the latest, the manufacturer of perhaps the world's favourite and most trusted talc brand, was appraised of the situation but decided not to waste all that gorgeous product and profit and so diluted their talc with "clean" talc and continued to sell it with impunity. This has been revealed in the course of a vast number of legal claims being brought against Johnson & Johnson in the United States.

In the last few years, individuals and families of people who claimed they had used asbestos contaminated Johnson & Johnson baby power and as a result, developed mesothelioma, have brought claims against the company in America. Johnson & Johnson have always denied their talc was contaminated with asbestos fibres. Similar claims have been brought against other well-known manufacturers of talcum power. Some of those claims have been settled or won at trial, but Johnson & Johnson kept fighting.

During 2021, the pharmaceutical giant transferred their legal liabilities in respect of talc claims to a subsidiary company, LTL Management

and in November 2021, the subsidiary declared itself unable to meet the claims against it and so began the long process of Chapter 11 Bankruptcy, bringing all current claims to a halt and preventing further claims being brought for the foreseeable. Meanwhile, Johnson & Johnson continues to trade and to make its medical products, including COVID-19 vaccines. You would be forgiven for finding all this shocking. Of course, not all Johnson & Johnson baby power would have been contaminated with asbestos fibres, but in 2020, it was reported that the US Food and Drug Administration Agency (FDA) had tested some of Johnson & Johnson's Baby Powder on sale to the public at that time and found it contained asbestos fibres. Despite this, Johnson & Johnson maintained its product was safe. Only in August this year did the company finally announce it would be ceasing further production of its talc based product and replacing it with a wholly corn starch based product.

Back in the UK, product liability claims are generally brought under the Consumer Protection Act 1987. The Act retains the standard 3 year (from injury or knowledge) limitation period for claims of personal injury caused by a defective product. In relation to asbestos diseases, the period between exposure to asbestos fibres and onset of a disease is said to be a minimum of 10 years and, in the case of mesothelioma, 40 to 60 years is not unusual. Consequently, the Act does not help asbestos sufferers who may wish to sue manufacturers of asbestos contaminated products in the UK.

What about talc sold in the UK? Only in the past few years, have UK consumers of talc who have developed mesothelioma, sought to bring claims in the American Courts, represented by US attorneys. The claims usually face the defence of "Forum Non Conveniens" (essentially that the claim is being brought in the wrong country) particularly where the British citizen has never set foot in the USA.

However, even a very short visit to the States has been sufficient to establish jurisdiction for

the relevant state Courts to hear the claims. Some cases have been settled but the number of claims continues to rise, as awareness is raised. So what is the problem with make-up? Many powder-based make up products, be it foundation, loose powder, bronzer, blusher or eye shadow, contain talc and so carry the risk of also carrying asbestos fibres.

In early 2019, the FDA confirmed the presence of asbestos in three make-up products made for and sold by Claire's Accessories, a US chain and UK high street fixture, beloved of young girls, in particular.

Several products were quickly withdrawn from sale. The Third episode of a BBC3 documentary, "Beauty Laid Bare" <https://www.bbc.co.uk/iplayer/episodes/p08119sn/beauty-laid-bare> which screened on 2 February 2020, highlighted a problem with asbestos contaminated talc in the products of several well-known and trusted cosmetic brands being sold here in the UK.

We work with American attorneys to investigate these claims in America, so please do contact us if you or someone close to you has developed mesothelioma and has used talcum powder or talc based make-up products.

As a past user of talcum powder and a current wearer of powder make-up, I was so concerned about the risk, that I disposed of my talc based products and began scrutinising the ingredients list on new products I was buying, avoiding any including talc, even though the damage may already have been done. I have opted instead for cream based products. Selecting corn starch based powder products is another option.

Few brands have openly acknowledged the risk of asbestos contamination in make-up products, replacing talc with corn starch or, in the case of Victoria Beckham Beauty, certifying the talc in her products is "asbestos free". Mostly, there is a conspiracy of silence around the subject and many cosmetic companies continue to make profits on the back of consumers innocently using their products. After all, the global

cosmetics industry was estimated to be worth \$603 billion in 2021. Surely it is time our Government health agencies woke up to the scale of the problem and took action to ban the import of these products in the UK? Time will tell.

Millions of people have been exposed to asbestos fibres in the UK from various sources, including in talc and powder make-up products. It is important to know though, that not everyone will go on to develop mesothelioma. No- one knows who the victims will be in future years but we can all take positive action now to protect ourselves, our family and friends by not buying such products in the first place. As consumers, we have power to force change and in doing so, protect our health.



Leigh Day raised funds for us by taking part in Chase the Sun 5km Run

On 17 August 2022, the Leigh Day Asbestos team (one of our solicitor panel members) took part in a 5km race at the Queen Elizabeth Olympic Park to raise funds in order for us to continue to support sufferers of mesothelioma and other asbestos related diseases.

Leigh Day were dressed in superhero outfits. The staff at Leigh Day said "we wanted to recognise the superhero efforts of London Asbestos Support Awareness Group and the invaluable support they provide to those affected by mesothelioma and other asbestos illnesses".

The atmosphere was fantastic and much fun was had by all at the event. Louise Chaffe, (one of our support workers) and her family, also joined the event. The event raised over £1,000 and we are very thankful to all those who took part and contributed to such a successful day.



Consult Construct run the Royal Parks Half Marathon



Consult Construct are a property and construction consultancy group, regulated by the RICS, focused on providing high quality construction, energy, and surveying services for a wide range of clients and building types.

As a company Consult Construct strive to encourage staff members to participate in team events and in the sponsorship of charities that relate to them individually and professionally.

Stuart Searle, Director of Consult Construct said "Our work takes us into a broad variety of buildings, making us all too aware of the extent to which asbestos was used in construction and our professional development has highlighted the potential detrimental health effects of this material and the devastating effect this can have on people's lives. Our team were excited to run in the Royal Parks Half Marathon on the 9th October 2022 in support of the London Asbestos Support Awareness Group, to raise vital funds for the advice and support they provide for those effected by asbestos related diseases"

We would like to thank Stuart Searle, Peter Munns, Nial Mckeown, Ed Munns and Stephen Burgess for all the training and the effort that has been put into completing the run to raise funds for us. We very much appreciate your support. You can still support the team by donating to their just giving page

<https://www.justgiving.com/fundraising/consult-construct>



WORLDS BIGGEST COFFEE MORNING

On 30th September 2022, we joined millions of people around the country raising money for Macmillan in support of cancer sufferers. Our support workers Jenny Thompkins and Louise Chaffe held the event at The Moby Dick pub in Dagenham, along with Macmillan Lead Nurse Ann Marie Frenchum. The morning was a great success and it was wonderful to be able to raise money for such a fantastic team.



Supporting London Asbestos Support Awareness Group

We are proud to partner with RunForCharity to access over 350 events throughout the country. There are local fun events from 5k inflatable courses to the popular, more challenging races such as the Brighton Marathon.

If you would like to get involved in any fundraising events please visit www.runforcharity.com/charity/london-asbestos-support-awareness-group.



Please help us to raise further funds by taking part in the London Landmarks Half Marathon on 2nd April 2023. The route runs through Central London taking in all the historical sites

We have 3 places left for this event. We would like to offer these places to family members or friends of sufferers. Registration for this event is now open.

Please contact jodie@lasag.org.uk if you would like to take this opportunity to raise awareness of asbestos related diseases, as well as raising vital funds to allow us to continue to provide support for sufferers.



Ways to donate to us to enable us to continue our vital work

We are registered with Just Giving. If you would like to donate or set up a fundraising page via our just giving page visit www.justgiving.com/lasag

As a not for profit charity we are always looking for ways to fundraise. You can support in many ways as follows:

- You can choose to give a regular monthly donation in memory of a loved one.
- Tribute collections at a funeral, memorial service, setting up a tribute page or a regular gift on a special date.
- Leaving a gift in a will - some clients choose to leave a legacy donation to help support more people affected by mesothelioma and other asbestos related diseases.

Should you wish to make a direct payment to us, our bank details are as follows:

Bank Payments

Bank: **Lloyds**

Account Name: **London Asbestos Support Awareness Group**

Sort Code: **30-98-90**

Account No: **18406368**

Card Payments

Secure online donations can be made at:

www.lasag.org.uk/donate

Alternatively **cash/cheque payments** can be sent to our registered office at:

Farthings, Bridle Lane, Loudwater, Rickmansworth, Herts, WD3 4JQ

Registered with



FUNDRAISING
REGULATOR

JustGiving™

Contact us:

E-mail: support@lasag.org.uk

Website: www.lasag.org.uk

Telephone: 0808 278 2515

Twitter: [@LASAGUK](https://twitter.com/LASAGUK)

Linked-In: [@London-Asbestos-Support-Awareness-Group](https://www.linkedin.com/company/@London-Asbestos-Support-Awareness-Group)

Instagram: [@LondonAsbestosSupportGroup](https://www.instagram.com/@LondonAsbestosSupportGroup)

Facebook: [LondonAsbestosSupportAwarenessGroup](https://www.facebook.com/LondonAsbestosSupportAwarenessGroup)

