



Registered Charity  
No.1174543

# London Asbestos Support Awareness Group

## Service Guide



For anyone affected by Mesothelioma, asbestos related diseases and Silicosis in London and the South East, including Essex, Kent, Hertfordshire, Surrey, Cambridgeshire, Norfolk and Suffolk.

0808 278 2515  
[www.lasag.org.uk](http://www.lasag.org.uk)

# Our story

The London Asbestos Support Awareness Group operates across London and the South East. The charity was set up by The London Hazards Centre Trust Limited, a registered charity, established in 1984. We obtained independent charity status in 2017, and all of our services are free.

Our trustees have been carefully selected and represent a diverse group with significant knowledge and experience of governance within the charity sector, as well as leading caring organisations and in campaigning for those suffering and in need of help and care.

## Our Patrons, Trustees and Ambassadors

### Victoria McCloud

Victoria was appointed patron of our charity in January 2024. In her previous role hearing asbestos cases in the High Court in London she delivered leading judgments including *Yates v HMRC* and *Cape v Dring*. In addition, she has presided over high-profile cases which have involved Donald Trump, Jeremy Corbyn, Katie Price and Andrew Mitchell MP.

Judge Victoria McCloud is a Doctor of Psychology and a respected academic, as can be seen from her roles at the following institutes:

- Head of Interdisciplinary Collaborations, Université de Paris 1, Sorbonne

Panthéon, Euro-Expert project.

- European Law Institute “Digitalisation of Civil Justice Systems in Europe” Advisory Board.
  - Associate Fellow, Global Network on Extremism and Technology.
  - Royal College of Psychiatrists Expert Reference Group on Non-Recent Child Abuse.
- Her wealth of knowledge is invaluable to us as a Patron of the charity.

### David Ellis OBE

David is committed to supporting the victims of exposure to asbestos. His wife died in 2011 from Mesothelioma. He has therefore experienced at

first-hand the agony his wife suffered and the devastating impact her illness and eventual death had on the whole family and their friends. David has over 20 years experience as a charity trustee including as Chairman of Hospice Boards. In October 2023 David was elected Chair of The Asbestos Victims Support Group Forum and plays a key part in the organisation alongside other trustees of the forum.

### Belinda Chadwick

Belinda has over 30 years experience of charity fundraising and support groups. Belinda has sound experience of governance through her trustee appointments and chair of three charities. Belinda’s motivation for trusteeship at the charity was instigated by the death of a very dear friend through an asbestos related disease.

### Dr Justin Lee

Justin was appointed Trustee in April 2025. He is a practicing medical practitioner, working as a Consultant Radiologist in Central London. Justin’s father was an engineer and construction company owner, and Justin was first made aware of the dangers of asbestos exposure whilst working for his father as a labourer. Justin became familiar with, and witnessed, the effects of asbestos exposure during his medical training and particularly whilst working at the Royal Brompton Hospital in London.

### Ed Sobczak

Ed spent 40 years working for the Inland Revenue which later became known as HMRC. He was promoted to HM Inspector of Taxes and served in the Revenue’s Head Office. From his early

twenties Ed has played an active role in local charities and support groups ranging from sea cadets to mental health and school fundraising to an orphanage in Kenya.

### Christine Stephens

Christine has 40 years management/leadership experience in both corporate and for non-profit organisations. Included in that is over 10 years governance experience as a Hospice Trustee; previous Chair of Governors for a local junior school and a Chair of HR committee for an Independent girls school. Christine is passionate about working to build support networks to help alleviate the pain, fear and suffering for the victims of asbestos related diseases and their families.

### Sam Jayasekara

Sam was appointed as our first ambassador in April 2025. She qualified as a nurse in 1995 and has worked in a variety of settings including acute, community and charitable sector and has worked in general areas, palliative care and oncology. She has been an oncology nurse and became a lung cancer and Mesothelioma Nurse in 2015.



# Our team

Our team is very diverse and is experienced in supporting sufferers of Mesothelioma, asbestos related diseases and Silicosis. London Asbestos Support Awareness Group's staff all have the skills, professionalism, knowledge and empathy that is expected to deliver a first class service to our clients at all times. Our team is continually upskilling and trained to ensure their professional and personal development is of a high standard. Our staff are all DBS checked for extra security.

**Jodie Bull**  
Head of Service



Jodie joined the charity in 2021 and has worked in the Healthcare industry for over 15 years managing services in the South East. She started her career as a daily carer before being promoted to Area Live In Care Manager for Essex, Suffolk and Cambridge. Jodie has experience in supporting patients in the community who were suffering with conditions ranging from COPD, Motor Neurone Disease, several types of Cancer, Parkinson's Disease and the early stages of Dementia through to end of life care. She is a first aid and manual handling trainer and has completed her First Response Emergency Care Level 3.

Jodie has experience of working with social services, district nurses, occupational therapists, dietitians, doctors, discharge planning teams and specialists. She then expanded her knowledge and experience into the private Ambulance sector as an Operations Manager. Jodie has a passionate caring nature and her clients, valued staff and Volunteers are always her priority.

Since joining the charity Jodie has been elected as Communications Manager/ Secretariat for The Asbestos Victims Support Group Forum UK in 2023. She is instrumental in the planning and the support of campaigns, meetings and events, communicating and providing secretariat duties between all forum members and groups.

To contact Jodie please email [jodie@lasag.org.uk](mailto:jodie@lasag.org.uk) or call **07949 767839**.

**Louise Chaffe**  
Communication  
and Engagement  
Support Advisor



Louise joined the charity in 2021, after spending 11 years working in the Police Control Room, answering 999 calls, non emergency complaints and directing officers on the radio channel. Louise then progressed on to a more senior role which involved supervising the officers and supporting people from all walks of life.

Louise then expanded her experience in the community to support vulnerable adults in their homes. This role included support and encouragement to access the community.

Louise has a calming, caring, empathetic nature and follows a productive work ethic due to the nature of her experiences.

Louise has been able to apply her skills, experience and knowledge to her role within the charity as Engagement & Communications Support Advisor. Her role includes the responsibility of the first point of contact for sufferers, family members and healthcare professionals.

To contact Louise please email [louise@lasag.org.uk](mailto:louise@lasag.org.uk) or call **07713 492486**.

**Jenny Tompkins**  
Client Support Advisor



Jenny joined the charity in 2021, after gaining her experience as a Private Ambulance Operations Manager.

Jenny has experience working for the Metropolitan Police as a controller and 999 call handler dealing with different backgrounds and situations, prior to this Jenny started her career as a mortgage adviser and arrears counsellor for 15 years at Halifax Building Society.

The fundamental part of this role was understanding the needs of her clients in their

current situations, giving accurate advice and guidance and gaining accurate information. Jenny is pro-active and organised with an understanding, empathetic and kind nature

To contact Jenny please email [jenny@lasag.org.uk](mailto:jenny@lasag.org.uk) or call **07526 499163**.

# Our team

We offer local support groups where our experienced staff, together with special guest speakers and other professionals are available to provide information, advice or a listening ear in a safe and private environment. We can provide information about free legal advice and help that's available from specialist lawyers who are proven experts in dealing with asbestos disease claims.



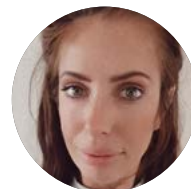
**Denise Hodges**  
Client Support Advisor



Denise started her career as an adult nurse in acute medicine and worked with bowel cancer patients as a nurse practitioner before becoming a Lung Cancer Nurse Specialist. She has gained a wealth of experience and a vast knowledge of Mesothelioma and other asbestos related diseases from working with patients over a number of years. When she retired from the NHS, she joined us and has been able to continue "to use her registered nurse knowledge to give invaluable support to the sufferers and their families.

To contact Denise please email [denise@lasag.org.uk](mailto:denise@lasag.org.uk) or call **07950 922874**.

**Jade Hannan**  
Client Support Advisor



Jade has personal as well as professional experience having had family members go through the treatment process, therefore she expresses empathy making it all the more important to her to support sufferers through such a daunting and difficult time. Jade is enthusiastic, hard working and has a passion for helping others. She is always happy to support events to raise awareness, raise funds and volunteer.

To contact Jade please email [jade@lasag.org.uk](mailto:jade@lasag.org.uk) or call **07585 337230**.

**Katrina Armstrong**  
Client Support Advisor



Katrina is highly experienced in working with patients and medical professionals in administrative roles across diverse sectors including medical & construction services. She joins us from her previous role as Medical Secretary in ENT at The Princess Alexandra Hospital. Along with her experience she brings with her a strong work ethic, proactive approach, and exceptional organisational skills. Kat possesses a keen eye for attention to detail and is able to build relationships quickly.

To contact Katrina please email [katrina@lasag.org.uk](mailto:katrina@lasag.org.uk) or call **0749 813 8411**.

**Gemma Smith**  
Client Support Advisor



Gemma has 12 years of experience working within the care industry and has been described by her clients as "a breath of fresh air who always goes above and beyond". She has a kind, caring and compassionate nature and is committed to providing exceptional support to sufferers and family members who have been diagnosed with a life changing disease.

Gemma has a drive to make a positive impact in the community and always works to the best of her ability.

To contact Gemma please email [gemma@lasag.org.uk](mailto:gemma@lasag.org.uk) or call **07777 149718**.

**Denise Burwell**  
Events Coordinator



Denise joined the London Asbestos Support Awareness Group as Events Coordinator in August 2024.

Her role is to plan and organise events including fundraising. Denise has suffered personal loss as her lovely Dad was diagnosed with Mesothelioma in April 2019 and tragically died on her birthday in March 2020. Denise's personal experience with mesothelioma was her motivation for becoming a volunteer for Mesothelioma UK as well as volunteering her time locally for London Asbestos Support Awareness Group. Naturally, Denise's motivation and drive to

become involved, and deliver results are very close to her heart. She has full understanding and empathy for the impact and devastation caused by this horrific 'almost entirely preventable' disease, and has found satisfaction and comfort the past few years volunteering, helping raise funds and awareness of the on-going risks of asbestos exposure in the U.K.

Denise said "I am delighted to have joined LASAG, working alongside Jodie and the team, where I will be using my broad range of skills and experience, and love of planning and organising. I hope to help put together some great events for patients, carers and supporters, to help make a difference to the lives of people affected by asbestos".

To contact Denise please email [events@lasag.org.uk](mailto:events@lasag.org.uk) or call **07984946109**.

# Our services

We offer a wide range of FREE services to all sufferers of Mesothelioma, asbestos related diseases and Silicosis in a variety of ways.

## Advice and support

Our advisors are very experienced in supporting sufferers of Mesothelioma and other asbestos related conditions. We fully understand the impact such diseases have on individuals and their families both physically and psychologically. Our staff are very knowledgeable about state benefits and compensation schemes and they will assess your eligibility to ensure you are receiving your full entitlement. We maintain close working relationships with Clinical Nurse Specialists and other key professionals in the care of the sufferer and their families.

## Home visits

Our team is available to visit individual sufferers and family members in the comfort of their own home to assist with the completion of lengthy, and often complicated, state benefit forms and government compensation schemes. Our advisors will explain the process, answer any questions and will continue to provide ongoing support and guidance. If preferred, this can be completed over the telephone or via zoom.

## Support group meetings

Our staff hold monthly support group meetings for sufferers and their family members/carers to meet others undergoing the same experience. Our experienced support staff, together with special guest speakers are able to provide information, advice or a listening ear in a safe and private environment. We maintain good working relationships with healthcare professionals including Clinical Nurse Specialists meaning they are able to answer questions about your treatment plan (with your consent) or symptoms you

are experiencing. Please check our website for any updates [www.lasag.org.uk](http://www.lasag.org.uk).

## Help with compensation

Our advisors will provide information about FREE legal advice from a panel of lawyers who are experts in dealing with asbestos disease claims and have the full interest of sufferers at heart.

## Care at home support

We have staff members who have vast experience in the social care sector. Our staff are able to provide information to sufferers when applying for funding should care be required and would like to continue to live at home. We can liaise with the local authority, continuing healthcare teams and palliative care support. We can also advise on how district nursing, occupational therapists and dieticians can support you to continue to live at home.

## Friendship and bereavement support

If you have been affected by the loss of a loved one either recently or in the past, our advisors can provide bereavement support to you. We run monthly friendship groups and are able to signpost you to other local organisations to support you. If you are struggling with grief there are local helplines and bereavement cafes which allows you to connect with others who have had similar experiences to you.





# Support Groups

Our support groups are designed to support anyone who is affected by Mesothelioma and other asbestos related diseases. Please join us for coffee, cake and conversation at your nearest support group. Our support groups have special guest speakers who can offer invaluable support include consultants, Lung CNS, cancer specialists and solicitors, as well as the opportunity to meet others living with the disease. Our experienced staff will be available to provide information, advice or a listening ear in a safe and private environment.

## Canterbury, Kent

The 2nd Tuesday of each month.  
2.00pm - 4.00pm.

Thanington Resource Centre,  
Thanington Road, Canterbury,  
CT1 3XE

**Contact**  
denise@lasag.org.uk  
07950 922874

## Surrey

Every 6 weeks on a Monday  
12 noon until 2pm.

Toby Carvery, 45 Cheam  
Road, Epsom, Surrey,  
KT17 1QZ

**Contact**  
jade@lasag.org.uk  
07585 337230

## Chelmsford, Essex

The 1st Friday of each month  
11am - 1pm.

Writtle Village Hall, 18  
The Green, Writtle,  
Chelmsford CM1 3DU

**Contact**  
louise@lasag.org.uk  
07713 492486

## Tunbridge Wells, Kent

The last Wednesday of each month.  
2.30pm - 4pm.

Mercure Hotel, The Park View  
Room 8 Tonbridge Road,  
Pembury, Tunbridge Wells,  
TN2 4QL

**Contact**  
denise@lasag.org.uk  
07950 922874

## Harlow, Essex

The first Wednesday of each month.  
2pm- 4pm.

The Church of Jesus Christ of Latter, Tysea Road, Latton Bush, Harlow, CM18 7DR

**Contact**  
katrina@lasag.org.uk  
0749 813 8411

## Dartford, Kent

The 3rd Friday of each month  
1pm - 3.00pm.

Temple Hill Square  
Dartford  
DA1 5HY

**Contact**  
jade@lasag.org.uk  
07585 337230

## Watford, Hertfordshire

The 1st Tuesday of each month.  
2.00pm - 4.00pm.

Stanborough Centre  
St Albans Road  
Watford, WD24 9JT

**Contact**  
louise@lasag.org.uk  
07713 492486

## City of London

Once a month - please check dates.  
2.00pm - 4.00pm.

The Lamb and Trotter,  
6 Little Britain,  
London, EC1A 7BX

**Contact**  
louise@lasag.org.uk  
07713 492486

## Rainham, Kent

The 1st Tuesday of each month.  
3.00pm - 4.30pm.

Rainham Cricket Club  
Berengrave Lane  
Rainham, Gillingham  
Kent, ME8 7NA

**Contact**  
Jade@lasag.org.uk  
07585 337230

## Dagenham, East London

The last Thursday of each month  
11.00am - 1.00pm.

Toby Carvery Moby Dick,  
Whalebone Lane,  
Dagenham,  
RM6 6QU

**Contact**  
Jenny@lasag.org.uk  
07526 499163

## Norwich & Norfolk

The last Saturday every other month.  
1.00pm - 3.00pm

Big C Centre  
Norfolk & Norwich University Hospital, Colney Lane  
Norwich, NR4 7UY

**Contact**  
gemma@lasag.org.uk  
07777 149718



# Friendship Groups

Our friendship groups are designed to support family members and friends who have sadly lost someone due to Mesothelioma and other asbestos related diseases. You are welcome to join us for coffee, cake and to support each other at such a devastating time. Our experienced staff have been trained by the National Bereavement Service in bereavement and will be available to provide you with bereavement information for local counselling sessions, advice or a listening ear in a safe and private environment. We will be looking to set up further friendship groups in the future. For further information on these locations please contact your Client Support Advisor.

## Canterbury, Kent

The 2nd Wednesday of each month, 10.30am - 12.30pm.

Fenwick's Department Store  
The Eatery, 2nd Floor  
St George's Street, Canterbury  
CT1 2SR

**Contact**  
denise@lasag.org.uk  
07950 922874

## Dagenham, East London

East London The last Thursday every other month. 11.00am - 1.00pm.

Toby Carvery Moby Dick,  
Whalebone Lane,  
Dagenham,  
RM6 6QU

**Contact**  
Jenny@lasag.org.uk  
07526 499163

# Our Legal Panel

We have a trusted panel of expert solicitors who specialise in asbestos disease claims. These solicitors are completely independent of our charity and we insist that they only represent people with asbestos-related conditions. Please contact your client support advisor for further information.

## Hodge Jones & Allen

HJA have been fighting for clients' rights since the 1970s. The wealth of combined experience and success in securing benefits, compensation and private medical treatment costs for their clients means you can be confident that your case will be handled by true experts, in an efficient and sensitive way.

HODGE JONES & ALLEN

## Leigh Day Lawyers

Leigh Day Lawyers have handled many of the landmark decisions for asbestos sufferers and their cases have not only provided substantial compensation, but have also changed the law. The team of expert asbestos solicitors are experts at identifying where any exposure took place and getting the right level of compensation for those affected.

Leigh Day  
LAWYERS

## Thompsons Solicitors

Thompsons have an established history as one of the leading asbestos solicitor firms in the UK. The first ever successful asbestos compensation claim was in 1972 and have been involved in every test case ever since. They have nearly 100 years' experience and have been winning cases for clients since 1921.

T THOMPSONS  
SOLICITORS  
STANDING UP FOR YOU  
100  
YEARS  
1921-2021

## JMW

JMW is an award-winning law firm and are renowned for their expertise in achieving positive outcomes for asbestos disease clients. JMW have represented Mesothelioma sufferers and their families for many years and are a full-service law firm. They are also able to provide victims of the asbestos industry with ancillary services in any arena.

jmw

# Legal Help and Compensation

If you or a family member have been diagnosed with Mesothelioma, an asbestos related disease or silicosis, you may be entitled to compensation. If you were exposed to asbestos in your workplace, it may be possible to bring a claim against your former employer, even if the employer is no longer in operation. Alternatively, your condition may have been caused outside of your work, for example from washing a family member's asbestos contaminated work clothes.

**Whatever asbestos related disease you have and however you believe it was caused, it is important that you obtain FREE legal advice from a specialist solicitor. Our carefully selected panel of expert solicitors will provide the right advice and will pursue and claim for you whenever possible. This legal service is FREE, whatever the outcome of the claim.**

You may know how your asbestos exposure occurred but frequently sufferers do not recall where or how they were exposed to asbestos. One of the solicitors from our panel of specialist law firms will meet you at home and go through your work history and other possible sources of exposure to find out when, where and how you came into contact with asbestos.

If you've been affected by Mesothelioma, other asbestos related diseases, or would like to have a confidential conversation, please contact us today  
**0808 278 2515**

## Why claim?

It has been known for many decades that asbestos was dangerous to health. From the mid 1960s employers knew it caused Mesothelioma and other asbestos related diseases and yet many employers did not take necessary precautions to protect their workers.

## Compensation value:

The aim of compensation is to put you in the same financial position as though you had not developed Mesothelioma. Although the amount awarded in each case is different, the amount

of compensation is usually substantial and could help with your care if needed.

## Timing & Time Limits:

A claim should be brought within three years of the date of diagnosis or within three years of the date of death. Asbestos related compensation claims are dealt with as quickly as possible by our panel solicitors and the Courts have fast track procedures in place for dealing with asbestos claims.

## Legal Fees:

If the case is successful then the organisation paying your

compensation will also pay your legal costs. If your case is unsuccessful then there is **no charge** to you. Our panel solicitors will explain how the costs work when they meet with you.

## How can we help?

We can provide you with information about making a civil compensation claim which includes contact details for solicitors who specialise in asbestos disease claims. To be on our specialist panel, solicitors have had to prove that they are law firms which only represent people with asbestos related

conditions and never act for organisations defending asbestos disease claims.

**Please note that we do not accept any responsibility relating to the appointment of a solicitor. Each of our panel firms of solicitors are completely independent of the charity.**



# What is Asbestos?

Asbestos is a naturally occurring, fibrous mineral. It was used extensively in the UK from the 1900s. Due to its huge versatility, asbestos was moulded into many forms, including sheeting and cloth. Many people have been exposed to asbestos fibres through their own work, the work of colleagues near to them, washing a family member's contaminated clothing or living near to an asbestos factory. The exposure is likely to have taken place many decades ago. Not everyone who has been exposed to asbestos will develop an asbestos related condition. However, for those people who do, it is important that they receive independent and impartial advice from specialists.

## Examples of products

Cement Roof



Pipe Lagging



Insulating Boards



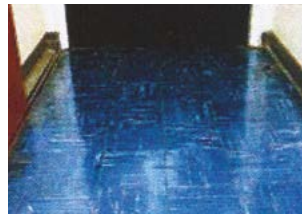
Cement Tiles



Ceiling Tiles



Floor Tiles

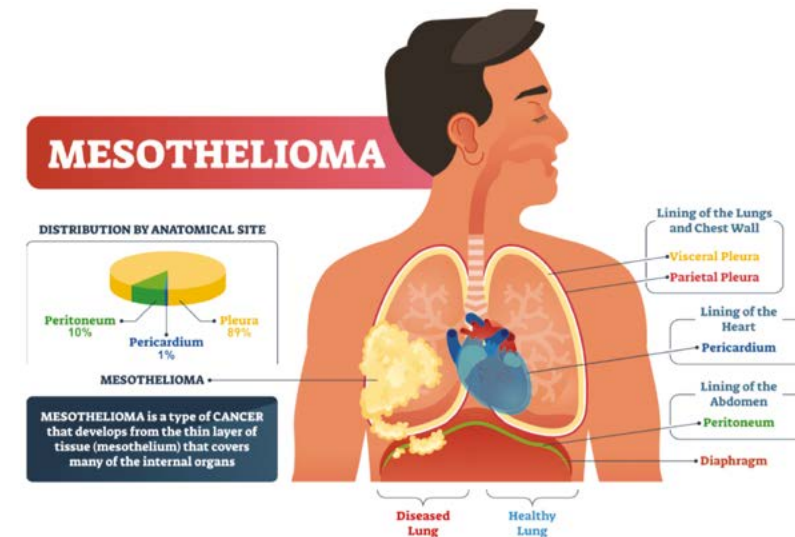


# Asbestos related diseases

**Mesothelioma** is an incurable cancer caused by exposure to asbestos dust and fibre. It usually develops in the fluid in the lining of the lungs (pleural Mesothelioma) but can also affect the lining of the abdomen (peritoneal Mesothelioma) and the lining of the heart (pericardial Mesothelioma).

**Lung cancer** can be caused by significant exposure to asbestos dust and fibre over a period of time. Lung cancer can have causes other than exposure to asbestos, the most common being smoking.

**Asbestosis** is the name for fibrosis in the lung caused by significant exposure to asbestos. This condition is caused when large quantities of asbestos fibres,



over time, damage the inner structure of the lungs, resulting in breathlessness.

**Pleural thickening** is caused when asbestos fibres breathed in penetrate the lining or pleura of the lungs, causing thickening of this

lining. This causes restriction to breathing because the lungs cannot expand fully.

**Pleural plaques** are areas of scarring on the lining of the lungs caused by asbestos fibres penetrating the lining of the lung. They may

become more extensive but they do not develop into any other asbestos disease.

**Please contact us if you have been diagnosed with any of these conditions. Time limits apply to civil compensation claims and for certain benefits.**

# The Asbestos Victims Support Group Forum (UK) (The Forum)



We are proud to be network and advice members of the Asbestos Victims Support Group Forum UK (AVSGF). We feel it is important to work together to give a voice to asbestos victims.

We are pleased to announce, our Chair, David Ellis OBE was elected as chair of the AVSGF in October 2023 and our Head of Service, Jodie Bull was elected as the Forum Communications Manager.

The Forum is a registered charity and an umbrella organisation for asbestos victims support groups in the UK. Joanne Gordon, the ex-chair of the Forum, was pleased to welcome the representatives of the

London Asbestos Support Awareness Group – which became full Forum members in April 2021.

Joanne said, “We are a collective of support groups who join together to fight for a better future for victims of asbestos related diseases. We campaign for improvements in benefits and for fairer compensation, raise money and fight for Mesothelioma research, demand decent medical treatment, raise awareness of asbestos to protect future generations. Collectively we provide one voice for asbestos victims”.

Campaigning Over the years we have proved that working together, supported by the people we are here to help, the victims of asbestos related diseases, we have been able to achieve so much.

The Forum have proved themselves a modern day ‘David versus Goliath’ against the Government and the asbestos industry.

For further information, visit [www.asbestosforum.org.uk](http://www.asbestosforum.org.uk)



## Customer commitment charter

We promise to do all we can to give you the best service, support and care that we can and make sure that you are cared for in the best possible way. We think about the sufferer in a person centred way to ensure they are happy with our services. We want you to tell us what you need and we will tell you how we can help. We work with your healthcare professionals providing your care including your clinical nurse specialists, benefits advisers and lawyers. We are committed to improving our services in an ever changing industry by talking to people and coming up with new ideas. These are our stated commitments to you:

### Commitment 1

We will support our staff to care about you and how you feel. To help them do this, we make sure they have the relevant training and development they need.

### Commitment 2

We promise that every time you see us we will do our best to ensure you are happy with our services. Our staff will be polite, respectful and caring at all times, tell you the truth, take time to listen to you, provide contact details and advise what will happen.

If we are unable to help we will advise you on who can support you and answer your questions as quickly as we can.

### Commitment 3

We take time to understand what you need to give you the best service we can. Staff will ask you if our service can be improved and we will always treat you as an individual. This means we will think about you and your needs, advise you what we can and cannot do and keep information about you private

and secure whilst remaining compliant with GDPR at all times.

### Commitment 4

We will make sure the places we meet you are friendly, safe and easy to access. Staff will be friendly and welcoming, thinking about your needs and support when you use our services and will ensure the locations we see you are safe, clean and tidy.

### Commitment 5

We will listen to your feedback and make changes where

possible. Trustees and managers will listen to what our clients have suggested and decide if we need to make changes. We will make sure our staff learn from each other and follow good practice.

### Need help?

Our support manager can support you. You can ask questions, make suggestions and log a complaint. Please email [support@lasag.org.uk](mailto:support@lasag.org.uk)

Our Complaints Policy and Procedure is available on request.

# A Testimonial from a Lung Specialist Nurse



Working together

**Imperial College Healthcare**  
NHS Trust



Charing Cross Hospital,  
Fulham Palace Road,  
London W6 8RF

To LASAG,

London Asbestos Support Awareness Group, you are an incredible team that help our patients and their families throughout their mesothelioma journeys. You provide extensive knowledge of the condition, its supportive needs and of the financial environment that surrounds this disease. You also support the lung cancer CNS team here in our knowledge and even sourced funding to develop our skills.

You are a friendly team that I highly recommend to every single patient diagnosed with mesothelioma. I have only heard positive reviews from my patients and their families.

Kind regards,  
Georgina

Macmillan Lung Clinical Nurse Specialist  
Imperial College Healthcare NHS Trust

# A Testimonial from a Cancer Nurse Specialist



**East Kent  
Hospitals University**  
NHS Foundation Trust

Kent and Canterbury Hospital  
Ethelbert Road, Canterbury  
Kent, CT1 3NG  
01227 868666

TO WHOM IT MAY CONCERN

RE: LONDON ASBESTOS SUPPORT AWARENESS GROUP

I have referred many mesothelioma patients to the above group for help and advice with claiming compensation and benefits relating to their disease.

The Support Workers consist of retired Lung Cancer Clinical Nurse Specialists and benefits claims specialists. Due to this their professional knowledge and experience of mesothelioma is extensive.

I have had nothing but positive feedback from my patients who have been helped by LASAG. From my perspective I feel that because the service is run by professionals who I know and trust, I can refer patients to them confident in the knowledge that they will be given the best advice and support.

Toni Fleming  
Lead Macmillan Lung Cancer Clinical Nurse Specialist/Mesothelioma UK CNS  
Kent and Canterbury/QEQM Hospitals



# Testimonials

"It is so nice to speak to people with the same condition as myself. And so interesting for me and my wife to listen to the guest speakers. This is a marvellous group run by such lovely people who are so kind and helpful and nice to know they are always at the end of the phone. Long may it continue."  
*Ron*

"These sessions I find amazing. I leave at the end of them feeling very elated. After being with people in the same boat as me, my fears and worries are sent back to where they belong and my positive mental attitude is maintained."  
*Lewis*

"Thank you for coming to see me yesterday. My head's been in a bit of a spin over the past few weeks, so it was good to take time out with you and learn more about my diagnosis and the support you can offer. Notwithstanding the irreplaceable support and love that my family bring, you tend to feel a little isolated once you're outside of the direct care that the medical professionals have been providing. I understand now the importance of the support that you and your organisation offers to sufferers of asbestos related diseases, and how it provides a vital and seamless link between all the various elements of the process. I look forward to staying in touch and will get along to the support group meeting at Canterbury at the first opportunity I have."  
*Keith*



"LASAG are an incredible organisation. Louise has been a massive help, giving both sound advice and much needed support to my parents as my father is suffering from Mesothelioma. With the rock of LASAG support, our family can move forward with direction and understanding, no longer feeling lost in the enormity of the situation."  
My Dads application for a disabled parking permit has been approved and should be with him in approximately ten days. Thanks again for everything"  
*Dave Knight*

"Many people in Swindon, because of the old railway works, have suffered over past years from various lung diseases, including Mesothelioma. As someone, who has lived in the town

since 1970, as a teacher and FE manager, it was a major shock to receive a diagnosis of Mesothelioma. It followed a year of increasing breathlessness. Having undertaken various searches on the Internet, I came across LASAG and their close link to Hodge Jones & Allen. I have nothing but thanks to both organisations for their encouragement and help in getting me the various benefits and lump sums available to Mesothelioma sufferers. Thanks particularly to Kelly from LASAG and Lorna from HJ&A"  
*Pete*

"After my diagnosis I understandably found myself with a range of emotions, not least of which complete shock. As part of my consultation, I was handed a range of information and leaflets for advice and support and one of these was for the London Asbestos Support Awareness Group. I am so pleased that I was given this information and that I reached out to find out more. The London Asbestos Support Awareness Group has provided me with so much support, one of the most useful things to me has been advice on how to talk to my friends and family about my diagnosis. In addition to the coaching support, they were able to give me information that enabled me to get the right legal support, in addition to understanding and claiming benefits needed

to help me deal with my illness and importantly to understand it. I highly recommend attending the support groups and I find these incredibly useful to meet and talk to other people in a similar position to myself. I can't recommend the support groups strongly enough, they are friendly and extremely professional, and I have found it is good to talk"  
*Colin Denton*

# FAQs

Our experienced staff are always available to provide information and advice, below are a few frequently asked questions about us and services available to you.

## **How much do you charge for your services?**

All our services are completely free of charge.

## **Where are you based?**

Our client support advisors are based in various areas which allows you to have access to a local advisor. Our staff are able to visit you at home in London and the South East including, Essex, Kent, Surrey, Hertfordshire, Suffolk, Cambridgeshire, Norfolk & Norwich and Buckinghamshire.

## **Will I have an allocated support advisor?**

Yes, you will be allocated a local client support advisor who is local to you.

## **What will happen on initial contact?**

Our engagement & communications support advisor will make contact and will provide information, explain how we can support you and arrange a home visit with your local client support advisor.

## **How long do benefits take to come through?**

Depending on the type of disease you have been diagnosed with such as Mesothelioma benefits can take 2-3weeks to process, however other claims may take little longer.

## **What benefits can I apply for and can my support worker help me with the**

## **completion?**

Your support worker can help you complete the benefits forms for Attendance Allowance/ Personal Independence Payment (dependant of age), Blue Badge, Government Lump Sum, Industrial Injuries Disablement Benefit (depending on your asbestos exposure at work).

## **What benefits can I apply for and can my advisor help me with the completion?**

Your client support advisor can help you complete the benefits forms for Attendance Allowance/ Personal Independence Payment (depending on age), Blue Badge, Government Lump Sum, Industrial

Injuries Disablement Benefit (depending on your asbestos exposure at work).

## **Do you have a support group I can attend?**

Yes, we have support groups in various locations. Your advisor will provide you with details. Family members and friends are always welcome as an extra support.

## **Can you liaise with my nurse if I am unable to contact her?**

Yes, our support staff are able to act as a go between to ensure consistency.

## **Can I get involved in raising funds for the charity?**

Yes, there are various ways you can support fundraising.

You can email [events@lasag.org.uk](mailto:events@lasag.org.uk) or visit our website for available fundraising spaces.

## **Do solicitors charge a fee for their service?**

No, we have a carefully selected panel of expert solicitors, as they are impartial and do not charge you for their services. Your client support advisor can provide you with information.

## **I am worried about my future care, can my advisor help me with that?**

Yes, client your support advisor is able to liaise with social care and continuing healthcare to support if you require care at home or in a hospice if you prefer.

## **I am not well enough to get out at the moment, do you run zoom support groups?**

Yes, in addition to our face to face support groups we do run zoom groups. Please contact your client support advisor who will give you details on how to access.

## **Will staff do LFT tests before meeting?**

All staff carry out Lateral Flow Tests before home visits and support groups.

## **Is there parking and wheelchair access at support groups?**

Yes, the locations of our support groups are very carefully considered to ensure easy access.

## **I am worried about my spouse when I have passed away, will you still make contact to make sure they are ok?**

es, our advisors will continue to support family members until such time they no longer need us. We also provide friendship groups to meet others in a similar situation.

## **I have a lot of savings – am I still entitled to benefits?**

Yes, you can still apply for these benefits. Your client support advisor will explain and support you with this.

## **Can you help with wills?**

Yes, we can provide details of Independent Financial Advisors who can help with wills, updating wills,

probate, legacies and power of attorney.

## **Can I donate to the charity?**

Yes, Everything we do depends on the generous donations of our supporters. 100% of the money we spend each year comes from sufferers, family members, companies and trusts who decide to support the work we do. Whether it is putting a few pounds in the donation tins, donations in lieu of flowers, leaving a legacy in your will, making a corporate donation or hosting an event, we are extremely grateful for your support.

# Fundraising

Everything we do depends on the generous donations of our supporters. 100% of the money we spend each year comes from the people, companies and trusts who decide to support us. Whether it is putting a few pounds in the donation tins, donations in lieu of flowers, making a corporate donation, leaving a legacy in a will, or hosting an event, we are extremely grateful for your support.

Visit [www.lasag.org.uk/fundraising](http://www.lasag.org.uk/fundraising) for more ways you can support us

## Bank Payments

London Asbestos Support  
SC: 30-98-90 Acc. No: 18406368

## Card Payments

Secure online donations: [www.lasag.org.uk/donate](http://www.lasag.org.uk/donate)

## Cash / Cheque

Farthings, Bridle Lane Rickmansworth, WD3 4JQ

# Donation slip

I wish to make a donation to London Asbestos Support for £

Title Name

Address

Postcode

Email

Phone

I am happy for the charity to contact me by (tick all that apply):

Post ☐ Email ☐ Phone ☐ SMS ☐



☐ I am a UK taxpayer and wish to Gift Aid my donation and any donations I make in the future or have made in the past 4 years.

You must pay income tax equal to the tax reclaimed by the charity on the donation. If you pay less Income Tax and/or Capital Gains Tax than the amount of Gift Aid claimed on all donations in that tax year it is your responsibility to pay any difference.

# Contact us

London Asbestos Support Awareness Group

Telephone: 0808 278 2515

Email: [support@lasag.org.uk](mailto:support@lasag.org.uk)

Website: [www.lasag.org.uk](http://www.lasag.org.uk)

Registered Charity No: 1174543

Charity Registered Address

Farthings, Bridle Lane, Loudwater,  
Rickmansworth, Herts. WD3 4JQ

# Social Media

[www.linkedin.com/company/london-asbestos-support-awareness-group](http://www.linkedin.com/company/london-asbestos-support-awareness-group)

[www.facebook.com/LondonAsbestosSupportAwarenessGroup](http://www.facebook.com/LondonAsbestosSupportAwarenessGroup)

[www.instagram.com/londonasbestossupportgroup](http://www.instagram.com/londonasbestossupportgroup)

[www.twitter.com/LASAG\\_UK](http://www.twitter.com/LASAG_UK)





For anyone affected by Mesothelioma, asbestos related diseases and Silicosis in London and the South East,  
including Essex, Kent, Hertfordshire, Surrey, Cambridgeshire, Norfolk and Suffolk. | Registered Charity No.1174543



**0808 278 2515**  
**[www.lasag.org.uk](http://www.lasag.org.uk)**